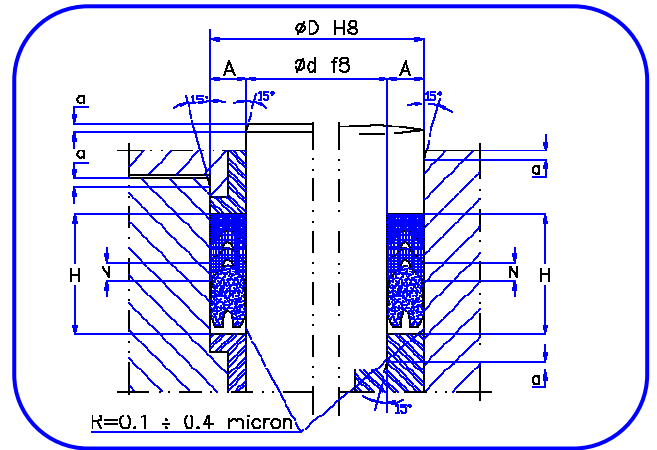
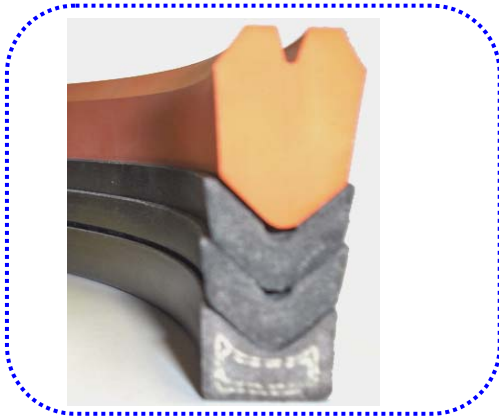


CARCOTEX SG



Carcotex / SG. It performs successfully in any condition and produce also no leakage with misaligned pistons, even at low pressure condition. Carcotex/SG is composed by fabric proofed rubber intermediate Vee rings and two terminal rings. The full rubber male terminal ring has exclusive design that allows it to seal also at low pressure and to act as a scraper, thanks to its geometry and interference with both piston and cylinder. **Carcotex/SG doesn't require initial compression nor periodical adjustments.** The bottom terminal ring is made of fabric proofed rubber with Kevlar reinforcement supporting pressure load and avoiding extrusion even with large cylinder/piston clearance.

It may be supplied endless or split.

| d (mm) | A (mm) | (1 + 0 + 1) | | (1 + 1 + 1) | | (1 + 2 + 1) | | (1 + 3 + 1) | | + N |
|-----------|--------|-------------|-------|-------------|-------|-------------|-------|-------------|-------|--------|
| | | H min | H max | H min | H max | H min | H max | H min | H max | |
| 100 ÷ 170 | 12,5 | 25,7 | 30,8 | 30,9 | 37,5 | 37,6 | 44 | 44,1 | 49,6 | + 6,2 |
| 150 ÷ 450 | 15 | 30,7 | 37,4 | 37,5 | 44,9 | 45,0 | 52,4 | 52,5 | 59,9 | + 7,5 |
| 400 ÷ 800 | 20 | 38,5 | 47,5 | 47,6 | 57,5 | 57,6 | 67,5 | 67,6 | 77,5 | + 10 |
| > 600 | 25 | 44,4 | 55,6 | 55,7 | 68,0 | 68,1 | 80,6 | 80,7 | 93,1 | + 12,5 |

Standard section related to shaft diameters.

Our sealing systems are mainly produced with rubberized fabric & elastomers. Today we have mainly 3 standard materials.

| MATERIAL | | Temperature (°C) | Speed (m/s) | Pressure (MPa) |
|----------|-------|------------------|-------------|----------------|
| Code | Type | | | |
| S820 | NBR | -40 ÷ 120 | 3 | 35 |
| HT720 | HNBR | -40 ÷ 170 | 3 | 35 |
| Z420 | Viton | -30 ÷ 200 | 3 | 35 |

Our standard materials are designed to cope with these conditions .

On request our "Carcoflon" treatment that gives a considerable reduction of dry friction coefficient between rubber & metal.

| Surface finish | | |
|----------------------------------|---------|--------|
| Surface roughness | Ra | Rt |
| Sliding surface | ≤0,4 mm | ≤4 mm |
| Outside Diameter of seal housing | ≤1,8 mm | ≤10 mm |
| End faces of seal housing | ≤3 mm | ≤16 mm |

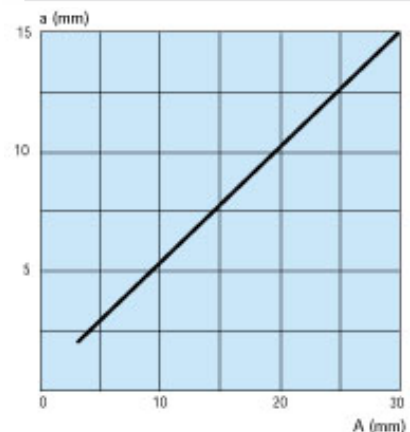
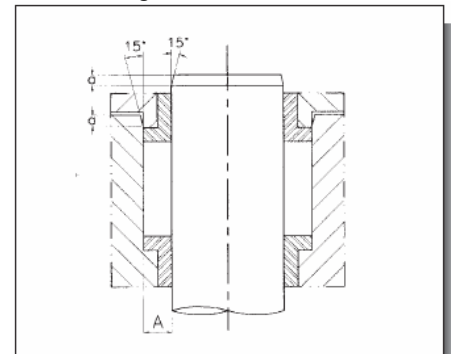
| d [mm] | H [mm] | |
|--------|--------|--------------|
| < 500 | H | + 0,25 -0 |
| > 500 | H | + 0,4 -0 |

DESIGN

Carcotex are suitable for both rod (ROS) and piston (PIS) fitting.

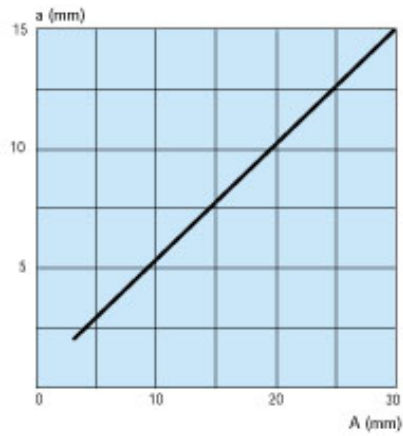
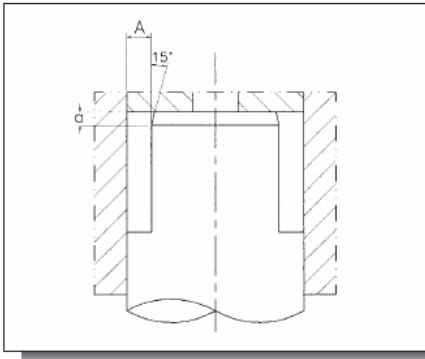
Cylinder assembly

In order to facilitate installation a 15° chamfer on cylinder and piston is required. The chamfer length "a" is function of cross section "A" as shown in fig. below.



Piston assembly

In case Carcotex is fitted on piston a 15° chamfer of length “a” function of the cross section “A” as given by fig. below is required



Please contact our technical dept for details.

CARCO S.r.l.
Via U. Foscolo, 4
20060 – Basiano (MI)

Tel +39.02.95760331
Fax +39.02.95760333

<http://www.carco.it>

Carco GmbH
Borstelmannsweg 143
20537 Hamburg
Tel: +49 (0)40 21985855
Fax: +49 (0)40 21907180
E-Mail: sales@carco-germany.de

<http://www.carco-germany.de>